



**NARAYANAGURU COLLEGE OF ENGINEERING
MANJALUMOODU, KANYAKUMARI DISTRICT**

CURRICULUM FEEDBACK REPORT-2018-2019

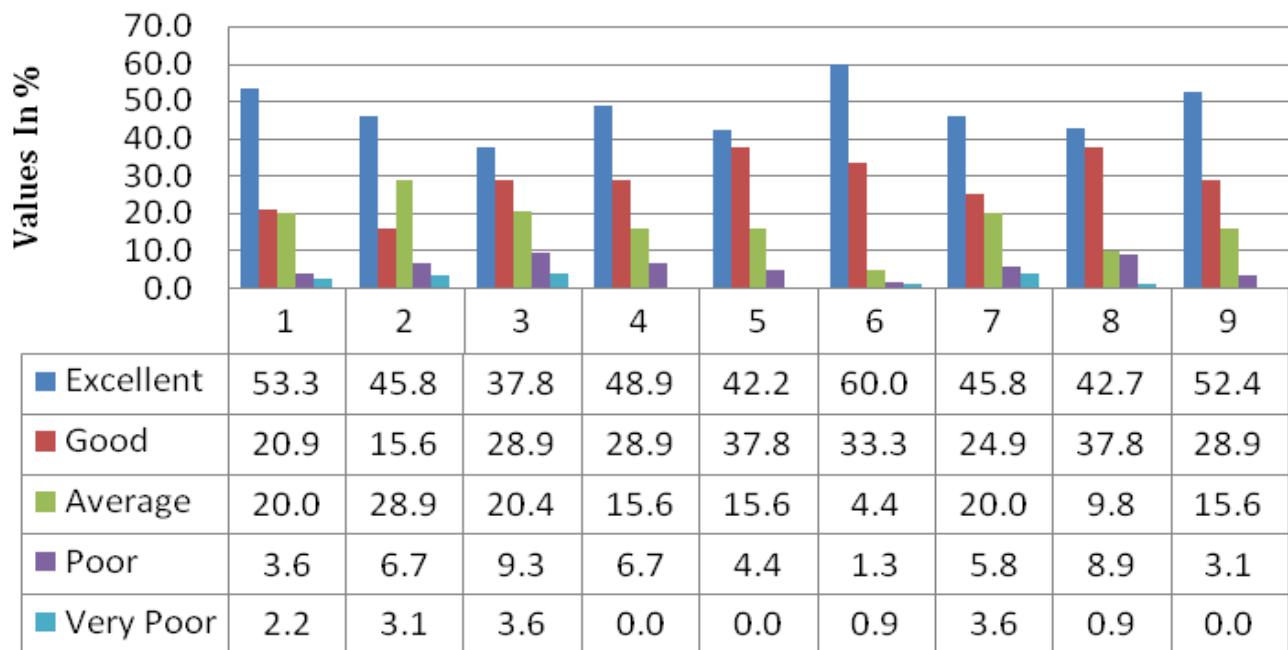
Keeping in mind the latest developments in the Educational field , Industry requirements and the societal needs, the structured questionnaires where formal feedbacks is obtained from the Alumni , Parents, Employers and teachers from various departments of Narayanaguru College of Engineering College. It addresses syllabus expectations and additional requirements with regard to course level assessment. The report includes clear statements from the part of students regarding size of the syllabus, extra learning required by the students, availability of text books and reference book in the market. There should also explanation about the availability of syllabus based e-resources, proportionality of the syllabus to the number of available hours, application level of the subjects, extent of support for higher education, and inclusion of latest developments in the subject. The following descriptions are the analysis of the data accumulated from various departments of the college which provide a clear understanding of the counsel of each department under UG and PG level. Suggestions and action taken had been reported in this analysis.

Department	UG (B.E)	Academic Year	2018-2019
Type of Stakeholder	Students	No. of Forms Collected	225

ANALYSIS

Sl No.	Rate the following questions as instructed on the right side columns	Excellent (5)	Good (4)	Average (3)	Poor (2)	Very Poor (1)
1	Size of syllabus in terms of the load on the student	53.3	20.9	20.0	3.6	2.2
2	Link of the program with the preceding courses / programs	45.8	15.6	28.9	6.7	3.1
3	Extent to which the syllabus demands extra reading by the student	37.8	28.9	20.4	9.3	3.6
4	Availability of text / reference books in the market	48.9	28.9	15.6	6.7	0.0
5	Availability of syllabus based e-resources	42.2	37.8	15.6	4.4	0.0
6	Proportionality of the syllabus to the number of hours available	60.0	33.3	4.4	1.3	0.9
7	Application level of the subjects	45.8	24.9	20.0	5.8	3.6
8	Extent of support for higher education	42.7	37.8	9.8	8.9	0.9
9	Inclusion of latest developments in the subject	52.4	28.9	15.6	3.1	0.0
10	Topics / Courses to be added					
11	Topics / Courses to be deleted					
12	Any Other Suggestions	Courses related to Engineering are growing faster and some points from syllabus need recent updation				

Feedback from UG Students on Curriculum



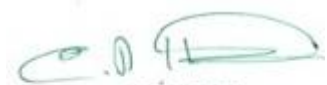
SUGGESTIONS

Engineering Students doing under graduation have suggested to have recent updation on their curriculum or a value added course on the same.

ACTION TAKEN:

Feedbacks collected from the students are analyzed properly. The suggestions made by the students have been taken into consideration and organized a value added course on recent technologies are introduced to the students in the academic year 2018-2019.



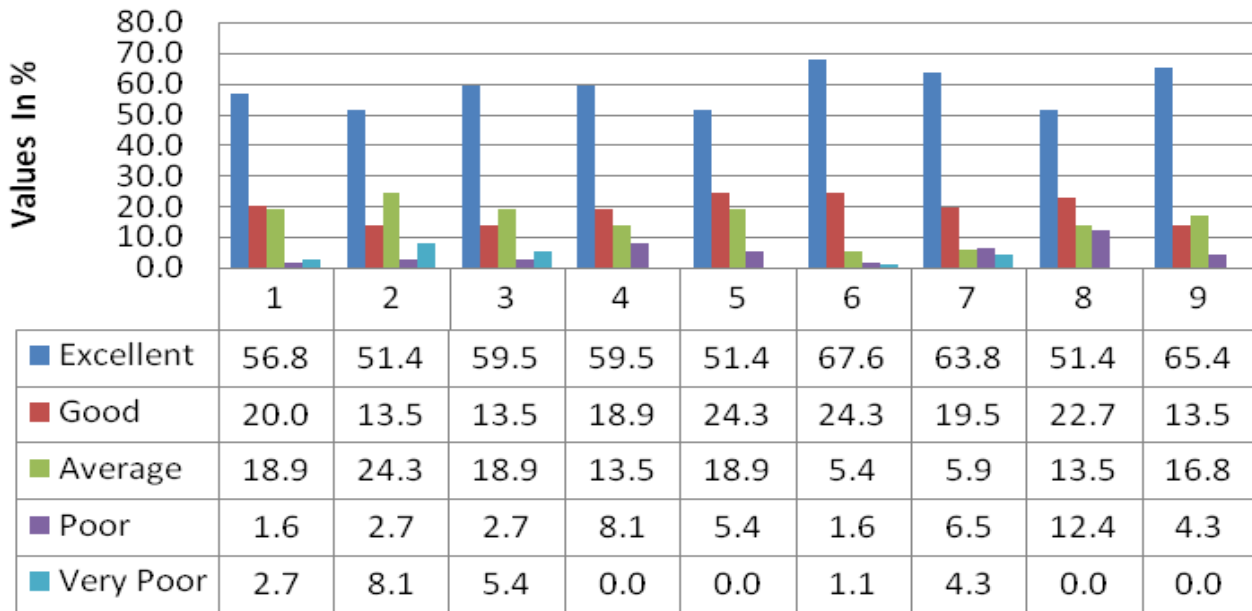

PRINCIPAL
 PRINCIPAL
 NARAYANAGURU
 COLLEGE OF ENGINEERING
 MANJALUMOODU,
 KANYAKUMARI DT. 629 151

Department	P.G (M..E.,M.B.A.,M.C.A)	Academic Year	2018-2019
Type of Stakeholder	Students	No. of Forms Collected	185

ANALYSIS:

Sl .No.	Rate the following questions as instructed on the right side columns	Excellent (5)	Good (4)	Average (3)	Poor (2)	Very Poor (1)
1	Size of syllabus in terms of the load on the student	56.8	20.0	18.9	1.6	2.7
2	Link of the program with the preceding courses / programs	51.4	13.5	24.3	2.7	8.1
3	Extent to which the syllabus demands extra reading by the student	59.5	13.5	18.9	2.7	5.4
4	Availability of text / reference books in the market	59.5	18.9	13.5	8.1	0.0
5	Availability of syllabus based e-resources	51.4	24.3	18.9	5.4	0.0
6	Proportionality of the syllabus to the number of hours available	67.6	24.3	5.4	1.6	1.1
7	Application level of the subjects	63.8	19.5	5.9	6.5	4.3
8	Extent of support for higher education	51.4	22.7	13.5	12.4	0.0
9	Inclusion of latest developments in the subject	65.4	13.5	16.8	4.3	0.0
10	Topics / Courses to be added					
11	Topics / Courses to be deleted					
12	Any Other Suggestions	Need to give exposure on latest technologies and hands on experience				

Feedback from PG Students on Curriculum



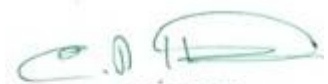
SUGGESTIONS:

In the feedbacks, Post graduate students have suggested to have exposure on latest technologies and hands on experience.

ACTION TAKEN:

The valuable feedbacks of students on syllabus have been collected and it has been analyzed. Based on the suggestions of students a value added course are introduced and Internship programs are initiated.

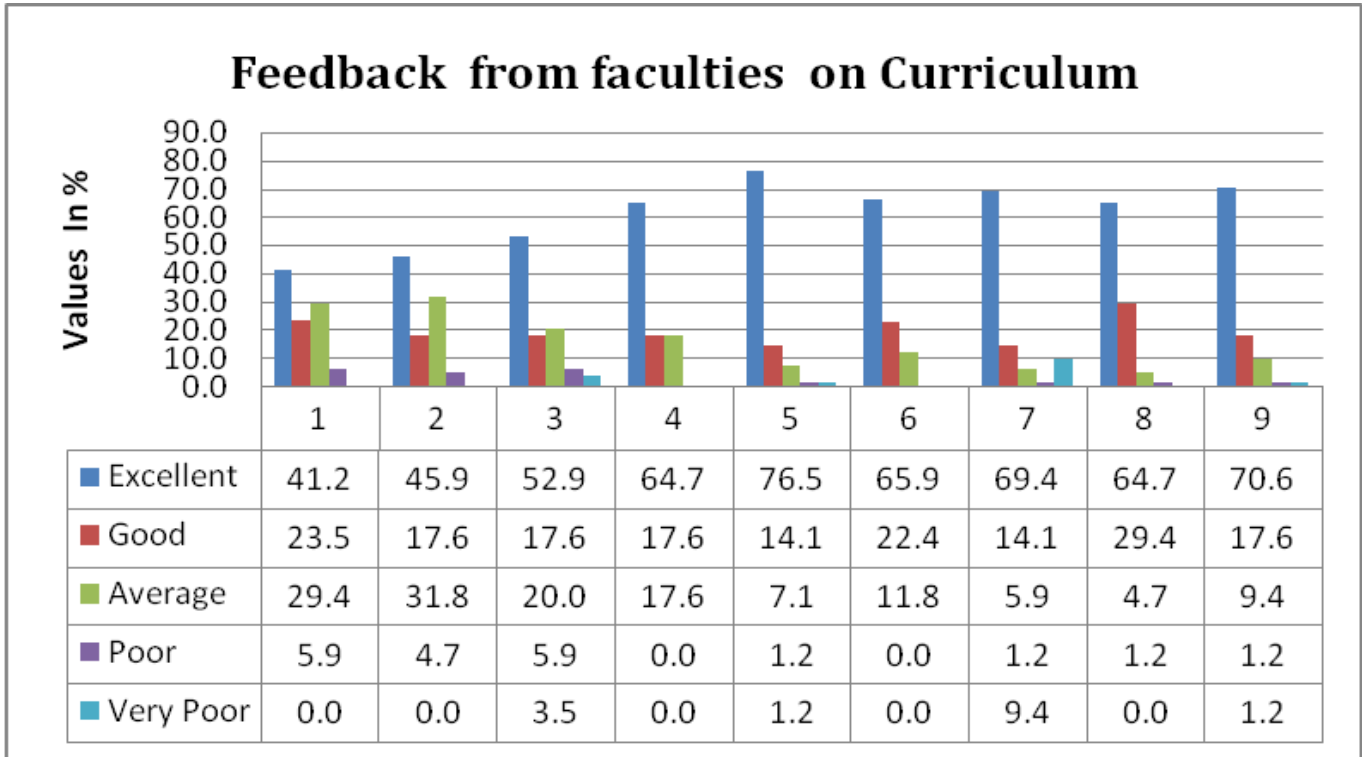



PRINCIPAL
 PRINCIPAL
 NARAYANAGURU
 COLLEGE OF ENGINEERING
 MANJALUMOODU,
 KANYAKUMARI DT. 629 151

Department	U.G & P.G	Academic Year	2018-2019
Type of Stakeholder	Faculties	No. of Forms Collected	85

ANALYSIS

Sl .No.	Rate the following questions as instructed on the right side columns	Excellent (5)	Good (4)	Average (3)	Poor (2)	Very Poor (1)
1	Size of syllabus in terms of the load on the student	41.2	23.5	29.4	5.9	0.0
2	Link of the program with the preceding courses / programs	45.9	17.6	31.8	4.7	0.0
3	Extent to which the syllabus demands extra reading by the student	52.9	17.6	20.0	5.9	3.5
4	Availability of text / reference books in the market	64.7	17.6	17.6	0.0	0.0
5	Availability of syllabus based e-resources	76.5	14.1	7.1	1.2	1.2
6	Proportionality of the syllabus to the number of hours available	65.9	22.4	11.8	0.0	0.0
7	Application level of the subjects	69.4	14.1	5.9	1.2	9.4
8	Extent of support for higher education	64.7	29.4	4.7	1.2	0.0
9	Inclusion of latest developments in the subject	70.6	17.6	9.4	1.2	1.2
10	Topics / Courses to be added					
11	Topics / Courses to be deleted					
12	Any Other Suggestions	Inclusion of latest development in subjects can be improved and also participation of students is also needed				



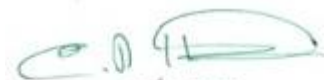
SUGGESTIONS

Faculties has given suggestion that inclusion of latest development in subjects can be added to improve the knowledge of the students and also participation of students is also needed.

ACTION TAKEN:

The departments have analyzed the feedback collected from the faculties and made recommendations to the management for organizing a value added course and also motivational program are organized to participate the students in various workshops and conferences.



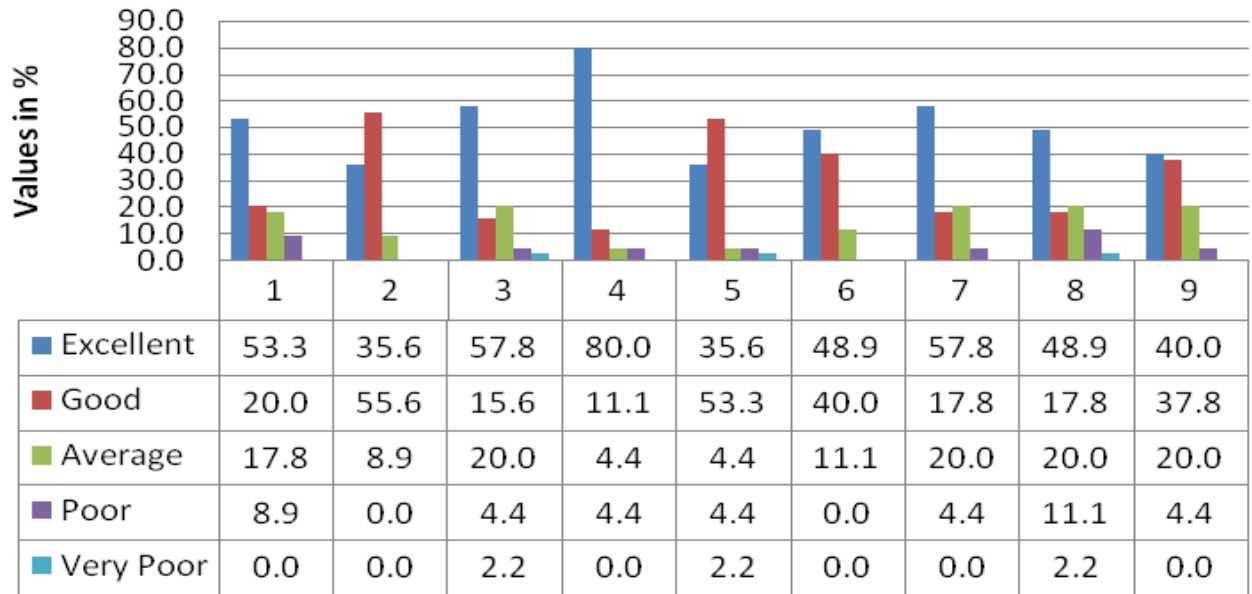

PRINCIPAL
 PRINCIPAL
 NARAYANAGURU
 COLLEGE OF ENGINEERING
 MANJALUMOODU,
 KANYAKUMARI DT. 629 151

Department	U.G & P.G	Academic Year	2018-2019
Type of Stakeholder	Parents	No. of Forms Collected	45

ANALYSIS:

Sl .No.	Rate the following questions as instructed on the right side columns	Excellent (5)	Good (4)	Average (3)	Poor (2)	Very Poor (1)
1	Size of syllabus in terms of the load on the student	53.3	20.0	17.8	8.9	0.0
2	Link of the program with the preceding courses / programs	35.6	55.6	8.9	0.0	0.0
3	Extent to which the syllabus demands extra reading by the student	57.8	15.6	20.0	4.4	2.2
4	Availability of text / reference books in the market	80.0	11.1	4.4	4.4	0.0
5	Availability of syllabus based e-resources	35.6	53.3	4.4	4.4	2.2
6	Proportionality of the syllabus to the number of hours available	48.9	40.0	11.1	0.0	0.0
7	Application level of the subjects	57.8	17.8	20.0	4.4	0.0
8	Extent of support for higher education	48.9	17.8	20.0	11.1	2.2
9	Inclusion of latest developments in the subject	40.0	37.8	20.0	4.4	0.0
10	Topics / Courses to be added					
11	Topics / Courses to be deleted					
12	Any Other Suggestions	Curriculum is good, But need focused on placement related courses				

Feedback from Parents on Curriculum




SUGGESTIONS

Parents have suggested that practical level of the contents in the syllabus must be improved since the programme is more practical oriented. Courses can be conducted in such a way that it should increase Employability of the students.

ACTION TAKEN:

The feedback about course contents are received from the parents and it has been discussed in the department meetings. Head of the department have discussed with the management personnel and conducted many placement related programs and workshops related to enhance their employability skills.

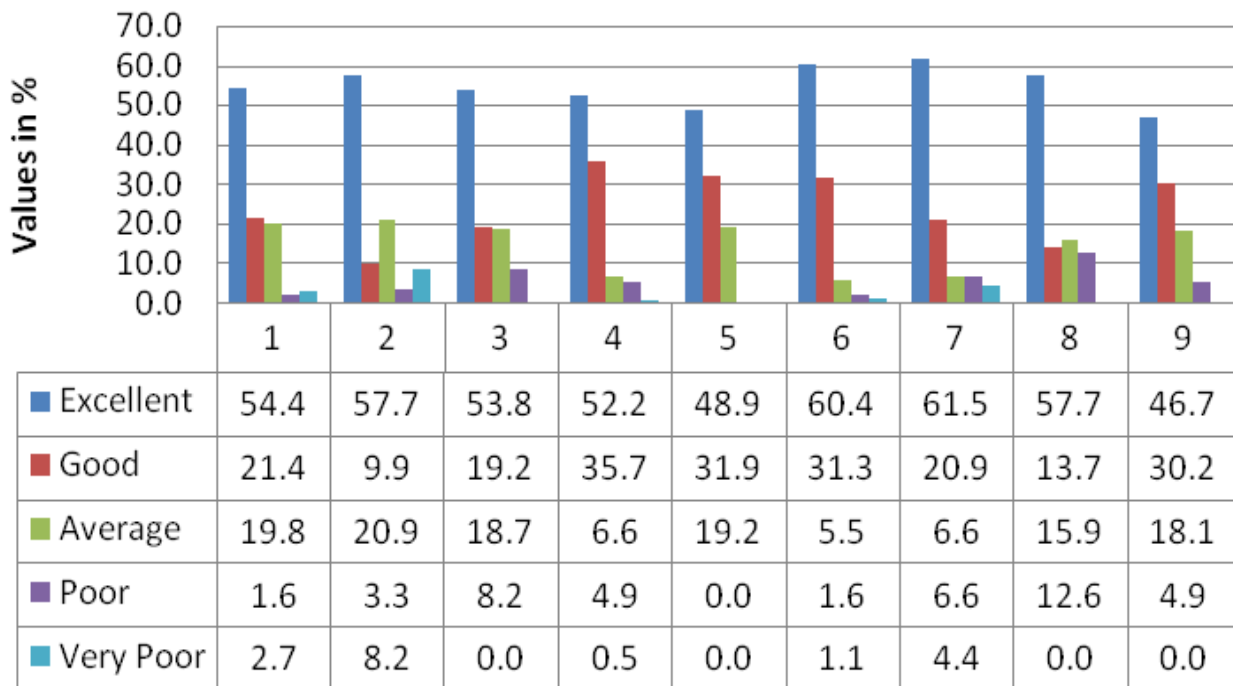



PRINCIPAL
 PRINCIPAL
 NARAYANAGURU
 COLLEGE OF ENGINEERING
 MANJALUMOODU,
 KANYAKUMARI DT. 629 151

Department	U.G & P.G	Academic Year	2018-2019
Type of Stakeholder	Alumni	No. of Forms Collected	182

Sl .No.	Rate the following questions as instructed on the right side columns	Excellent (5)	Good (4)	Average (3)	Poor (2)	Very Poor (1)
1	Size of syllabus in terms of the load on the student	54.4	21.4	19.8	1.6	2.7
2	Link of the program with the preceding courses / programs	57.7	9.9	20.9	3.3	8.2
3	Extent to which the syllabus demands extra reading by the student	53.8	19.2	18.7	8.2	0.0
4	Availability of text / reference books in the market	52.2	35.7	6.6	4.9	0.5
5	Availability of syllabus based e-resources	48.9	31.9	19.2	0.0	0.0
6	Proportionality of the syllabus to the number of hours available	60.4	31.3	5.5	1.6	1.1
7	Application level of the subjects	61.5	20.9	6.6	6.6	4.4
8	Extent of support for higher education	57.7	13.7	15.9	12.6	0.0
9	Inclusion of latest developments in the subject	46.7	30.2	18.1	4.9	0.0
10	Topics / Courses to be added					
11	Topics / Courses to be deleted					
12	Any Other Suggestions	Alumni also suggested about the inclusion of latest development in the subject				

Feedback from Alumni on Curriculum



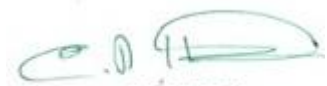
SUGGESTIONS:

Feedbacks of alumni about curriculum and course content are collected during the academic year starting. From the feedbacks few things they have suggested to the department that inclusion of latest development in their subjects has to be improved and Employability enhancement programs also should be implemented more.

ACTION TAKEN:

The department head has analysed the suggestion made by the alumni and also discussed about this with the management and planned to conduct many more employability enhancement program in the current year.

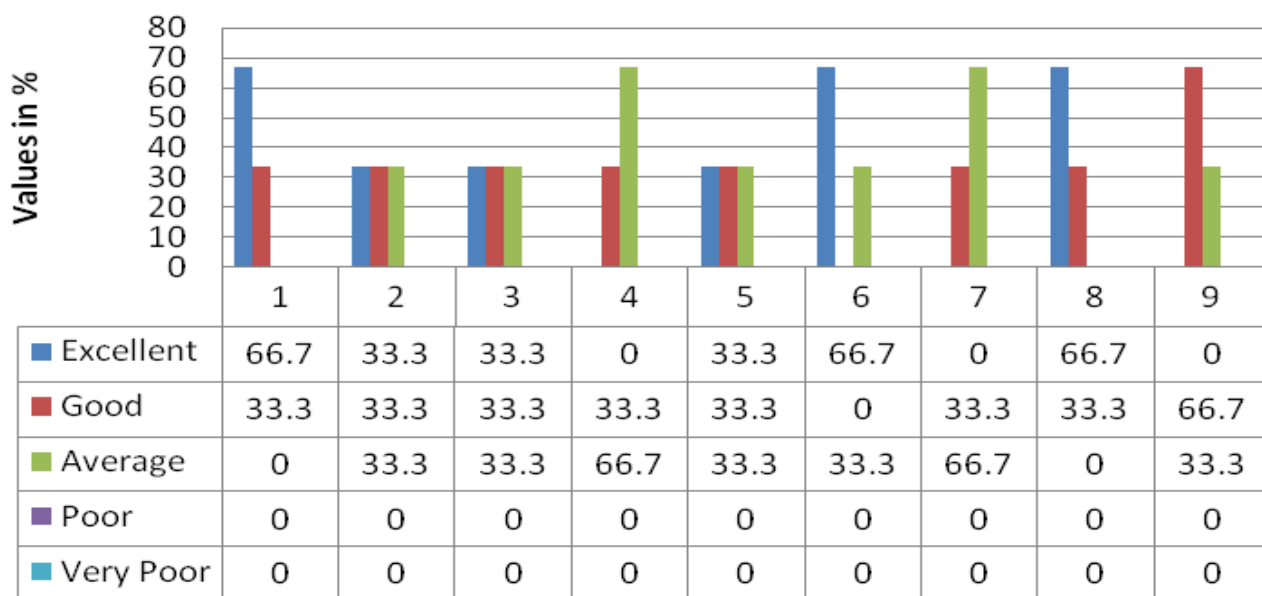



PRINCIPAL
 NARAYANAGURU
 COLLEGE OF ENGINEERING
 MANJALUMOODU,
 KANYAKUMARI DT. 629 151

Department	U.G & P.G	Academic Year	2018-2019
Type of Stakeholder	Employer	No. of Forms Collected	3

Sl .No.	Rate the following questions as instructed on the right side columns	Excellent (5)	Good (4)	Average (3)	Poor (2)	Very Poor (1)
1	Size of syllabus in terms of the load on the student	66.7	33.3	0.0	0.0	0.0
2	Link of the program with the preceding courses / programs	33.3	33.3	33.3	0.0	0.0
3	Extent to which the syllabus demands extra reading by the student	33.3	33.3	33.3	0.0	0.0
4	Availability of text / reference books in the market	0.0	33.3	66.7	0.0	0.0
5	Availability of syllabus based e-resources	33.3	33.3	33.3	0.0	0.0
6	Proportionality of the syllabus to the number of hours available	66.7	0.0	33.3	0.0	0.0
7	Application level of the subjects	0.0	33.3	66.7	0.0	0.0
8	Extent of support for higher education	66.7	33.3	0.0	0.0	0.0
9	Inclusion of latest developments in the subject	0.0	66.7	33.3	0.0	0.0
10	Topics / Courses to be added					
11	Topics / Courses to be deleted					
12	Any Other Suggestions	Insisted to add more Practical level courses				

Feedback from Employer on Curriculum




SUGGESTIONS

Employers are happy with the course contents and its load on the student. But at the same time they have also insisted to add more Practical level to the course contents and recent developments in the courses so that the students will be aware of technological developments in their field.

ACTION TAKEN:

Though the institution is affiliated with university, department can't add courses in the curriculum. Instead of trying to add it with curriculum, the department had planned to organize value added courses for the students and also motivate the students to participate in various workshops to develop their practical knowledge.




PRINCIPAL
 PRINCIPAL
 NARAYANAGURU
 COLLEGE OF ENGINEERING
 MANJALUMODU,
 KANYAKUMARI DT. 629 151